



SHBT MyHome 2.0

User Manual

Copyright Notice © 2009

SHBT – Sellit Hungary Bt. All rights reserved. Information in this manual is subject to change without notice and does not represent a commitment on the part of Sellit Hungary Bt. All company and product names mentioned in the manual may be trademarks or registered trademarks of their respective owners.



Table of Contents

Table of Contents	2
Overview	4
Software Main Features	4
Installation	6
System Requirements	6
Installing SHBT MyHome	6
Registration	6
Uninstalling.....	7
Using SHBT MyHome.....	8
Overview	8
Task Bar	9
Home Panels.....	9
Communication Panels.....	10
Appointment Panels.....	11
Tasks panels.....	12
Settings panels.....	12
Media Bar	14
Configuring SHBT MyHome	16
Change language in MyHome.....	16
Opening the settings	16
Common/General Settings.....	16
Touch Control	16
Themes	16
Text Color	17
Click Events.....	17
Technical Support.....	18
About The Trial Version.....	18
Before Contacting Technical Support	18
Contacting Technical Support.....	19



Overview

SHBT MyHome is the next generation of touch oriented user interface for Windows Mobile devices. You will be inspired by the beautiful design which let your device look pretty and ease the way of control. Have quick access to the important functions of the device and handle your phone without using your stylus anymore.

Software Main Features



Next generation Touch oriented User Interface

All technology advantages combined into one product. Perfectly optimized for finger usage to can handle your device with ease:

MyHome understands following gestures:

- Finger slide horizontal (Flipping Panel left/right)
- Finger slide vertical (Sliding Panel up/down)
- Finger touch (Direct jump to Panel or launch shortcut)
- Press & Hold (Opens MyHome Quick Access Menu)
- Kinetic Scrolling (SHBT AppLauncher)



New! Multilanguage support

Use MyHome in your preferred language. We will provide localized language files in our forums, but you are welcome to support us with translations.



ClearVibrate touchvibration feedback

Control your device now with more precise and enable the brand new ClearVibrate function of MyHome to get a vibrating response of your touch control (Haptic Feedback).



New! Device and Web Search support

MyHome provides now quick access to search the device and to make a web search on google.com.



New! Orientation and enhanced resolution support

MyHome is now compatible with SQUARE/QVGA/WQVGA/VGA/WVGA resolution displays and support also landscape mode.



New! SHBT AppLauncher included

MyHome is bundled with the touch friendly application launcher SHBT AppLauncher which let you quick access to your programs installed.



MyHome extended device lock menu

Have quick access to important features of your device/phone to meet the needs of daily usage.

Lock menu features:

- Lock device
- Handle backlight
- Power off and reset device



Phone enhancement

Enhance your basic Windows Mobile Professional based phone with SHBT MyHome and get the control of your device back again.

Handle your appointments, tasks, phone calls, text messages, E-Mails...



Skinning Support

Changed the look and feel of MyHome and visit our forum for exciting new skins/themes. Or create your own skin and share with other users on the community.

Note: For detailed description of SHBT MyHome features and change history please visit the product page on our website.



Installation

Installation of SHBT MyHome is a very simple process and takes less than five minutes to complete. The following installation guide will help you.

System Requirements

SHBT MyHome supports Windows Mobile 5.0 or Windows Mobile 6 device (including WM 6.1 and WM6.5). Devices without a touch screen and older platforms such as Pocket PC 2003 are not supported. SHBT MyHome will not install on these devices.

SHBT MyHome need pre-installed .net compact framework 2.0 or above (since Windows Mobile 5.0 this framework is a part of Windows Mobile). However, if the framework is missing you can download it free of charge from our website or from Microsoft Download Center in your preferred language:

Microsoft Download Center: <http://www.microsoft.com/downloads/Search.aspx?displaylang=en>

SHBT Home Download Page: <http://www.shbt.hu/20080315116/downloads.html>

Installing SHBT MyHome

After you have downloaded the SHBT MyHome distribution file you should install it to your device. For a successful installation you will need a Pocket PC device attached to your Windows desktop PC. You will also need Microsoft ActiveSync software in order to install SHBT MyHome to your device.

Note: If you are using Mobile Installation File (CAB) you do not need ActiveSync, because of the fact that you are installing SHBT MyHome directly from your device.

When you run the software installer on your desktop PC it will ask you to accept the license agreement and will start the installation program. You will be prompted for the location where you want the software to be installed. For better performance of SHBT MyHome it is recommended to install the software to your device and not to the storage card.

Note: Microsoft ActiveSync works only with Windows XP SP2 or earlier. If you have Windows Vista, your synchronization settings will be managed through the Windows Mobile Device Center. Windows Mobile Device Center is available through the Windows Mobile Device Center page.

Registration

The trial version of SHBT MyHome is only for test purposes and have no possibility for unlocking to full version by entering license key.



To obtain the serial number with the correct version of the software you need to purchase a SHBT MyHome software license and you will receive your serial number and download link to the software by e-mail.

For correct licensing information and purchase process please read the following FAQs:

<http://www.shbt.hu/Knowledgebase/General.html>

<http://www.shbt.hu/Knowledgebase/SHBT-MyHome.html>

<http://www.shbt.hu/Knowledgebase/Policies-and-Legal.html>

Uninstalling

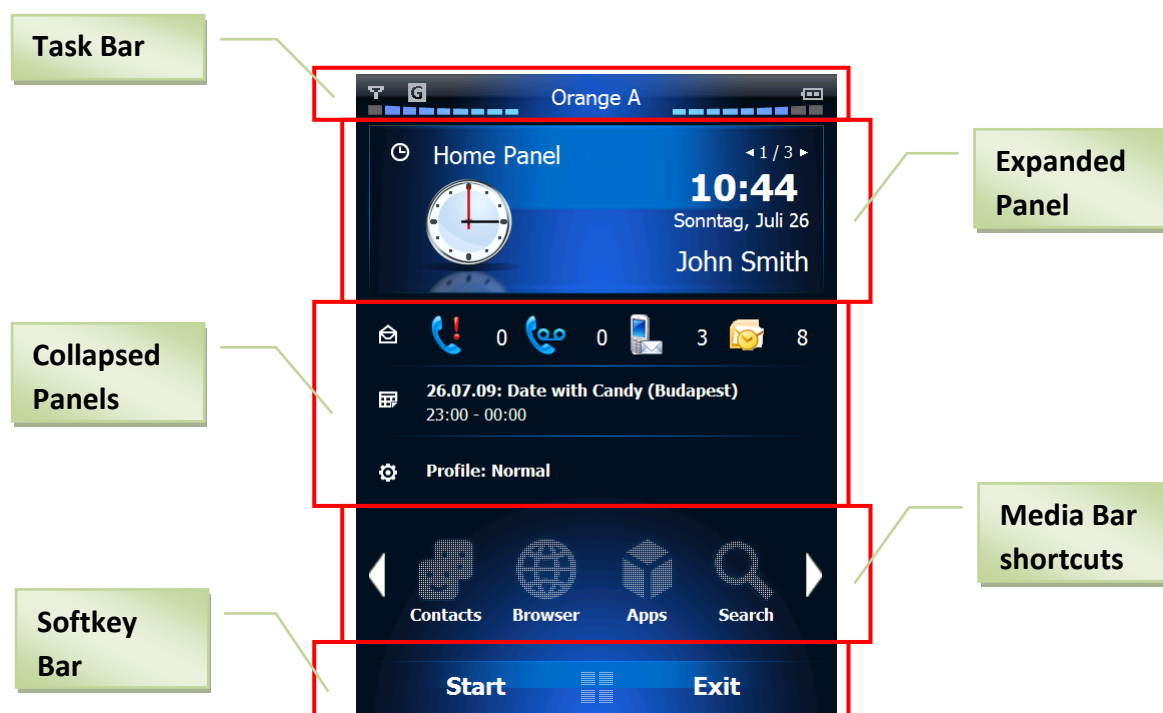
To remove the product from your Pocket PC:

1. Go to **Start menu > Settings**
2. Open **System** and tap on **Remove Programs**
3. Select **SHBT MyHome** from the list and tap on the **Remove** button
4. Choose **Yes** to confirm removing

Using SHBT MyHome

Overview

To get a good overview from the powerful user interface of SHBT MyHome lets have a look at the main screen of MyHome:



The Main Screen gives you a quick and easy way to check your device status. You can see your most important information with a quick glance, for the fastest and most direct way to use your device. For example, you can open your Inbox to read new emails with just a tap, or with a few key clicks:

- The **battery indicator** icon on the top right corner shows the remaining power in your battery. Next to it the **connection status** icon.
- The network **signal indicator** on the top left corner shows the signal strength of your mobile service provider. Next to it the **data connection status** indicator.

The Panel interface of SHBT MyHome is a big advantage and let us to see a lot of information in a structured way and great overview. If you want detailed information of a collapsed panel just navigate to it. Each panel has its specific icon in the top left corner and a panel name. If there are more panels available (horizontal movement) then you can see the number of the panel in the top right corner (< X / Y >).

The first panel is the **Home Panel** and gives you critical information on date and time (see Home Panel detailed description). The collapsed Communication Panel show new **missed calls, new voice messages, new text messages and new e-mails count**.



Below you can find the Appointments Panel where you can see **upcoming appointments** and an overview of your **active tasks**. The last panel row let you see the active **phone profile**.

The **Media Bar** is an easy and fast way to **access your preferred programs** by launching them directly from SHBT MyHome through a **shortcut**. The SoftKey Bar let still access the windows mobile interface by tapping on **Windows Icon to open start menu**. The **left Softkey [Start]** executes the currently selected panel, shortcut and the **right Softkey [Exit]** exits SHBT MyHome.

Note: SHBT MyHome is fully customizable – so the most panels, buttons and shortcuts can be changed to launch different third party applications.

Task Bar

The taskbar was described in the previous section. As an extension there should be however mentioned that there are two events set as standard when you click on the **signal bars** or on the **battery indicator**:

- Signal indicator → Phone Settings
- Battery indicator → Power Settings

Home Panels

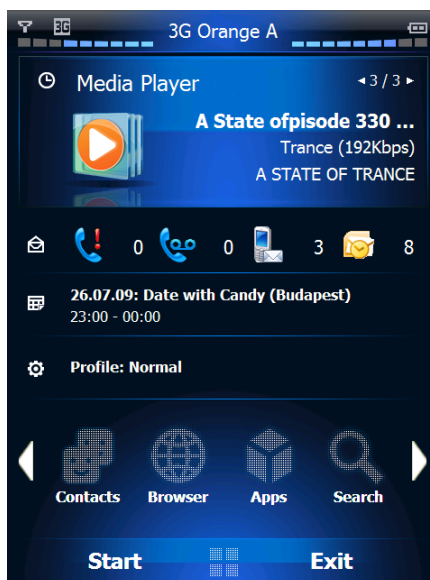
The Panel in the first position is the **Home Panel** and shows you the following information:

- See current **date and time**
- Below you can see your **owner name**
- The clock icon changes depending on **active alarm notification** status

By tapping the Home Panel the Date / Time settings of your device will be launched. There are two other panels that can be accessed in this position through horizontal movement.

The **Weather Panel** (SHBT Weather required) gives you a quick overview of the current weather condition (37 different weather icons conditions). In the top right corner you can see the current temperature with your preferred units (C/F), the synchronization time and the location below. By tapping on the Weather Panel the SHBT Weather software will be launched for detailed weather forecasts and configuration of Weather information.

The **Media Player Panel** shows you information about the currently played track in Windows Media Player. See the title, album name, genre and bit-rate. By tapping on the Media Player Panel you can start Windows Media Player.



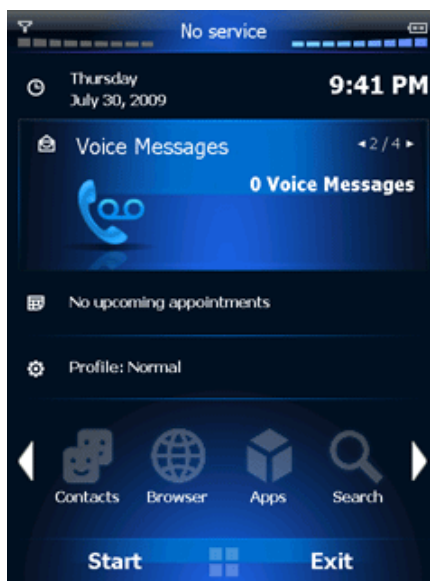
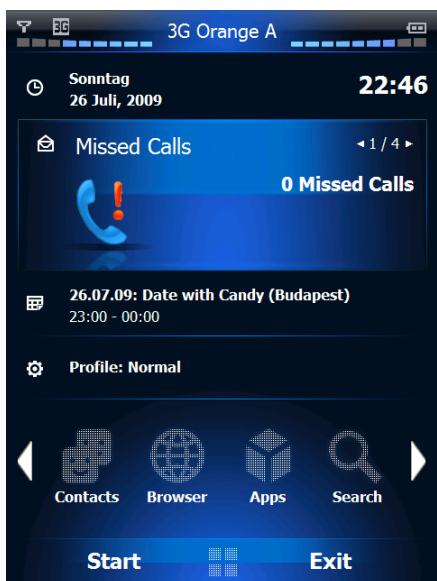
Communication Panels

The **Missed Calls Panel** is the first of the four communication panels and shows you the following information:

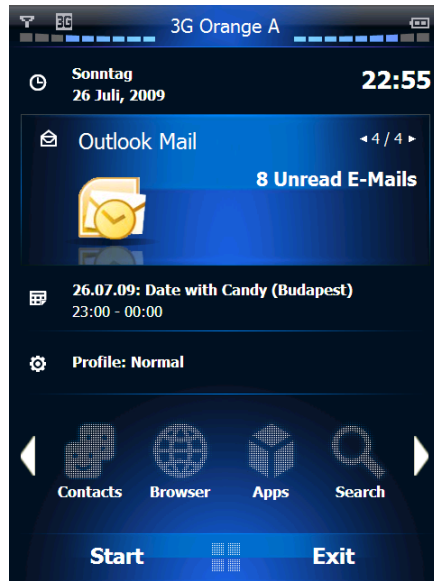
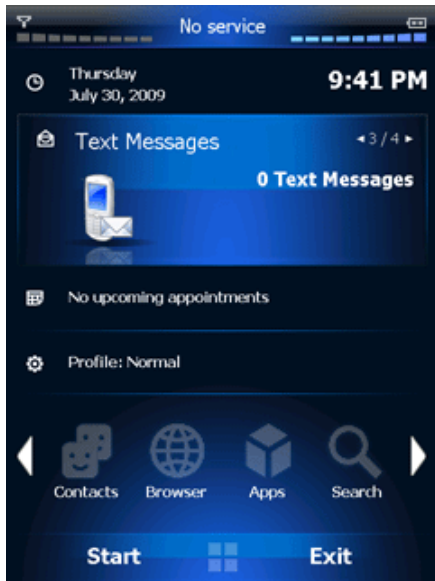
- See the missed calls count
- See the last caller's number
- See the last callers name (if available in contacts)

By tapping this panel the call history will be opened.

The second Panel is the **Voice Messages Panel** where you can see the new voice messages count. By tapping on this panel the voice mail will be called if already configured.



The next Panels are the **Text Messages Panel / Outlook Mail Panel** which let you see the new text messages / E-Mails count. By tapping on this panel Outlook Mobile will be launched where you can easily access the SMS / MMS folder / E-Mail folder to check the messages.

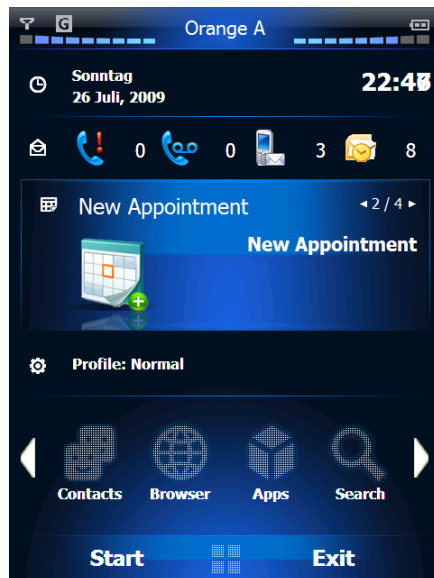
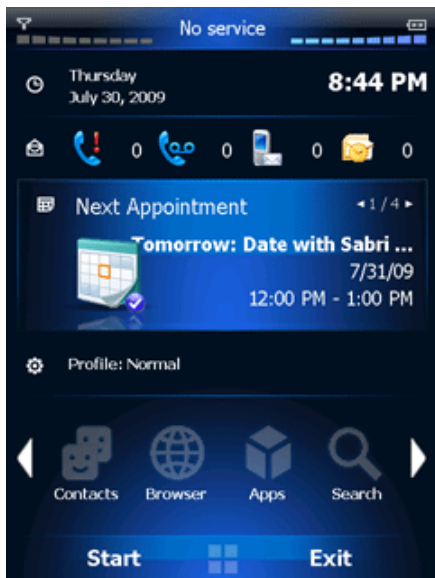


Appointment Panels

The **Next Appointment Panel** is the first of the two appointment panels and shows the following information:

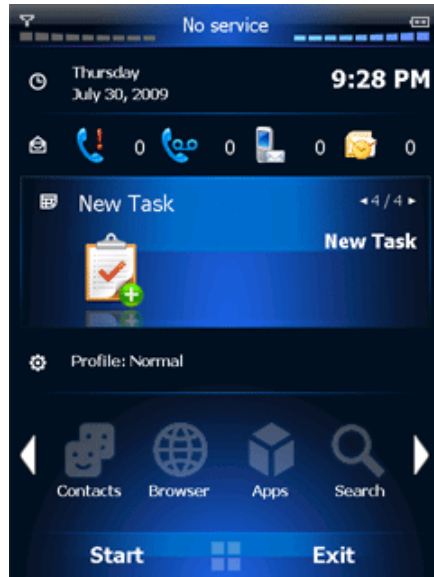
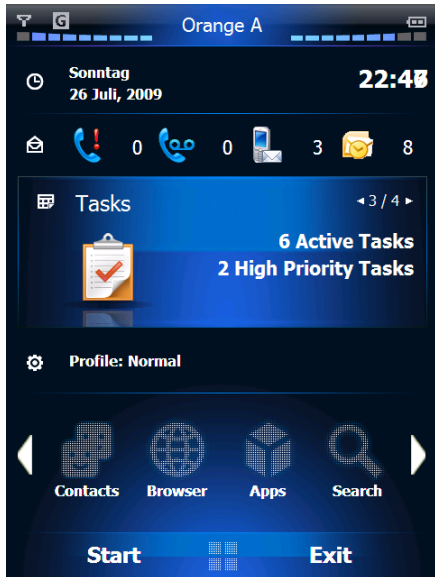
- Appointment subject
- Appointment Date
- Appointment Start / End time

The second panel is the **New Appointment Panel** and let you create a new appointment.



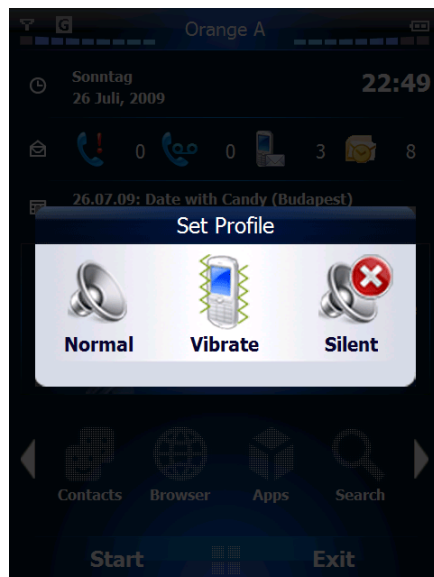
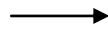
Tasks panels

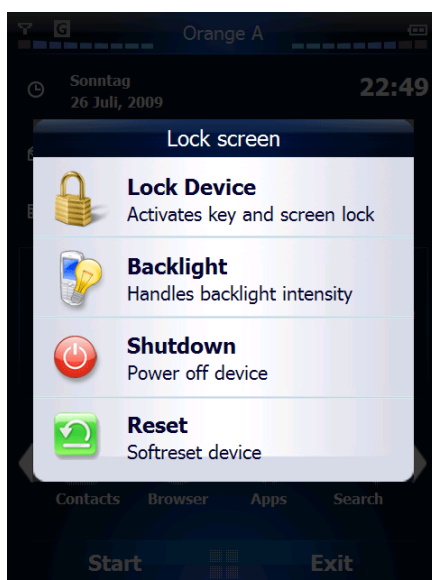
These two panels allows you to have a quick overview of the **(high priority) active tasks** count and let you **create new tasks** directly.



Settings panels

In this panels collection you can access various settings to configure your device. The first panel is the **Profiles Panel** which shows the currently active profile of your device and let you change by tapping this panel.

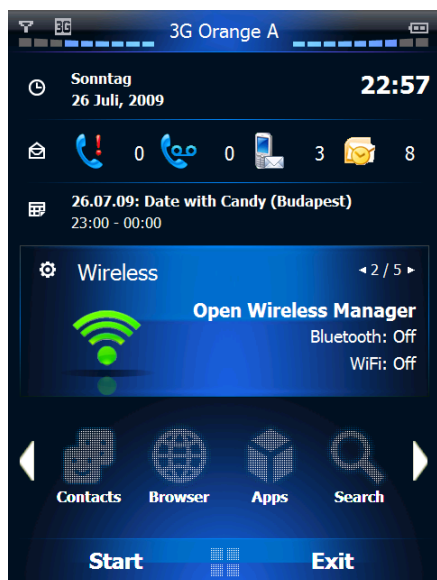




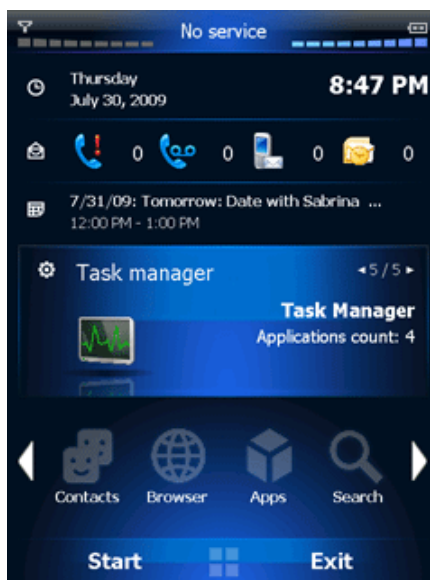
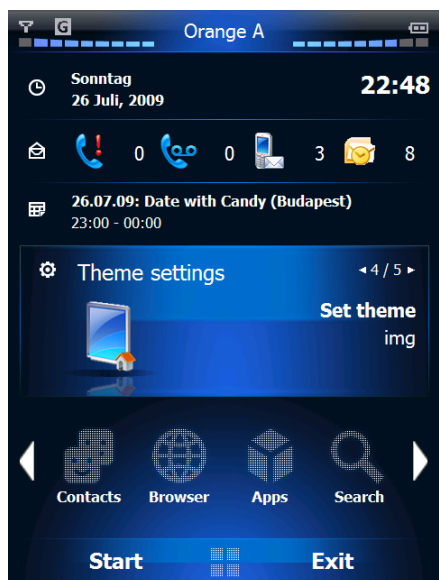
The **Extended Lock Menu**, which you can access by press&hold somewhere on the screen, allows you to handle the following device features:

- Lock Device (inbuilt Screen and buttons lock)
- Handle backlight intensity
- Shutdown / power off device
- Soft-Reset your device

The **Wireless Panel** gives you an overview about Bluetooth and WiFi status and let you open the Wireless Manager to handle the devices. With the **Ringtone Panel** it is easy to see the current ringtone and by tapping on this panel you can change the ringtone in the ringtone settings.

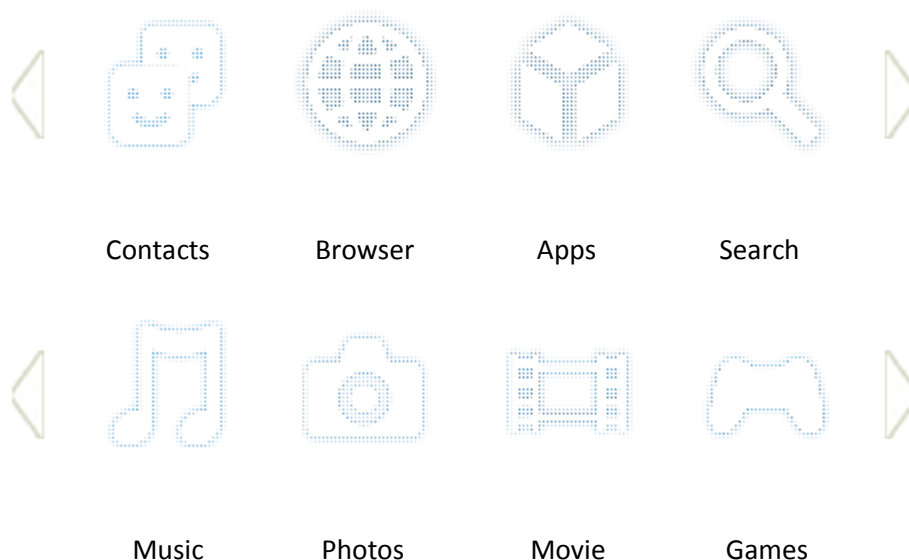


The most important Panel is the **Theme Settings Panel** which is the direct access to SHBT MyHome settings. There you can configure your SHBT MyHome for your needs (see Configuring SHBT MyHome for details). And the last Panel is the **Task Manager Panel** which shows the number active applications and opens the inbuilt task manager.



Media Bar

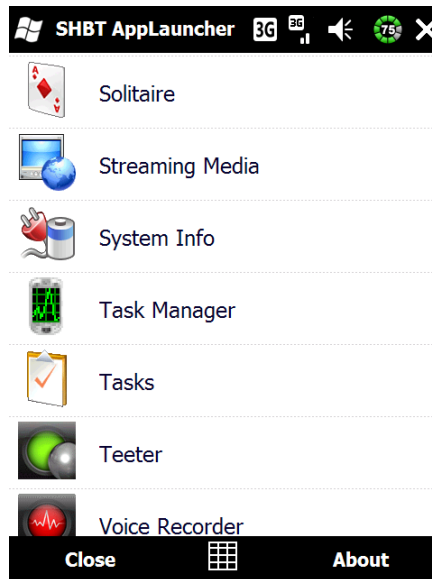
The **Media Bar Icons** gives you quick access to your preferred third party application. You can fully customize the shortcuts in the settings of SHBT MyHome.



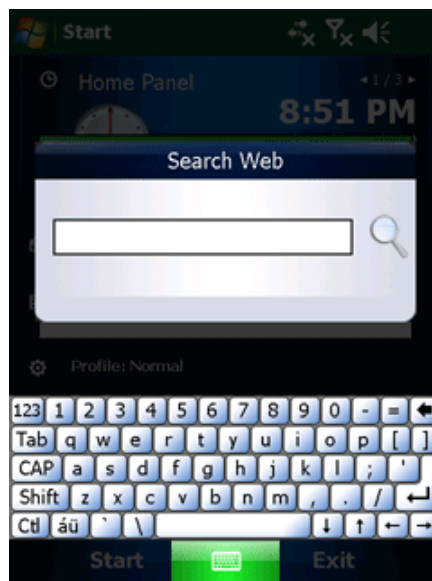
The default configuration of the Media Bar Icons launches the following applications:

- Contacts → Inbuilt Contact Manager
- Browser → Pocket Internet Explorer
- Apps → SHBT AppLauncher*
- Search → Inbuilt web search or search app of Windows Mobile**
- Music → Windows Media Player
- Photo → Inbuilt Picture and Movie Manager
- Movie → Inbuilt Picture and Movie Manager
- Games → Games folder through File Explorer

*SHBT AppLauncher allows you to launch installed application quick and with ease:



**You will be asked if you want to start the windows search functionality to search for files on the device or to start a web search



Configuring SHBT MyHome

Change language in MyHome

You can change the language of MyHome by visiting our forums -> downloading a preferred language file. Now you have only to **replace** the **language.xml** in the installation folder of MyHome. Be Sure that MyHome is not running while replacing the language file.

Opening the settings

SHBT MyHome settings are available through the **Theme settings Panel**. By opening the settings menu of SHBT MyHome you have the possibility to manage the following options (see options below).

When you finished your options and tap **“Close”** you will be asked for **saving the changes**. If you tap **“Yes”** then settings changes will be saved and will be loaded also after a re-launch of SHBT MyHome. Otherwise, if you tap **“No”**, the changes will not be saved and they will be lost after re-launching SHBT MyHome.

Common/General Settings

- Add SHBT MyHome to **autostart** (automatically starts MyHome on system (re-)boot)
- Add SHBT MyHome as **Softkey shortcut** (you can assign a shortcut to SHBT MyHome for the **left and right Softkey** on the **Today Screen** of Windows Mobile, to can access MyHome very fast and easy)

Touch Control

- **Invert Touch Movement** (you can **invert** the **horizontal / vertical finger slide**)
- **ClearVibrate**(Enable/Disable to activate the **vibrating touch response** feature)

Themes

- Change the look and fill of SHBT MyHome by downloading and installing new **themes/skins** from our website community(<http://www.shbt.hu/forum/>) and selecting the themes folder on your device that you want to set active. When you tap **“Select”** a **touch scroll optimized folder selector** will be opened (You can go into a **subdirectory** by tapping the **folder twice** and can select the **theme folder** by tapping the **left menu item “Select”**)
- After a theme is selected you will see a theme preview image



Text Color

- Chose the text item's color for perfect matching with your selected theme/skin. By Dragging the RGB-Trackbars (Red,Green, Blue) you can change the color of the selected item.

Click Events

One of the most user friendly options is the **Click events setting**, which let you **fully customize the application / events** that should be executed for each item.

Note: There are some items that are function specific (like Weather Panel, Media Player Panel, Theme Settings Panel) and do not allow a customization

By Tapping **"Select"** a file browser will be opened where you can change the selected item (You can go into a **subdirectory** by tapping the **folder twice** and can select the **application to execute** again with tapping the **item twice**).

For example you could assign "CoreCodec CorePlayer" for the Movie Media Bar Icon to launch "CorePlayer.Ink". Another example would be to assign the New Appointment.Ink from WebIS Pocket Informant to collect new appointments directly with Pocket Informant.

Tip: The best way to start out is to open the \Windows\Start Menu\Programs\ directory where usually the shortcuts will be created for the most applications.



Technical Support

This chapter contains technical support information. It includes all the information you need to assist you.

About The Trial Version

The trial version of SHBT MyHome includes all of the features available in the registered version. The trial version of SHBT MyHome is limited to 3x launch and pops up demo messages regularly. You can use the trial version only to check how SHBT MyHome works. After purchasing SHBT MyHome you will have to de-install the trial version and install full version again.

To obtain full version with the serial number you need to purchase a SHBT MyHome software license and you will receive your serial number with download link to full version by email. For more information please visit our website at: <http://www.shbt.hu/Knowledgebase/General.html>

Before Contacting Technical Support

Please read this section before contacting Technical Support, it includes many common important issues users might face.

- Refer to the Frequently Asked Questions (FAQs) in the Support section of our website. The FAQs may have information and helpful hints that are more current than the User Manual: <http://www.shbt.hu/Knowledgebase/SHBT-MyHome.html>
- If you have successfully installed SHBT MyHome onto your device but the application cannot be launched (it is not starting and there is no error message) this means that you have not installed the required .net compact framework. You can obtain it from our download-site: <http://www.shbt.hu/20080315116/downloads.html>
- The configuration file of SHBT MyHome may change from newer release versions, so it can happen that you have to delete the full installation path of SHBT MyHome before installing a newer version

Contacting Technical Support

Please take advantage of one of the SHBT free technical support options:

- Choose the appropriate category for your question and submit it to our support team at:
http://www.shbt.hu/component/option,com_rsform/Itemid,145/
- Ask your technical question or post feature request to forum to get quicker reply directly from the developer's team or user's community. Solutions to your problems are available 24 hours a day at no cost on SHBT Community. You must first register as a member before using SHBT Community.